

REPLACING THE POWER INLET/USB BOARD ON A CUBE3 / EKOCYCLE

❖ Tools required for this procedure:

- #0 or #1 Phillips screwdriver
- 2.0mm Hex Screwdriver
- 2.5mm Hex Screwdriver
- Straight edge screwdriver

➤ Unplug the machine from the power source.

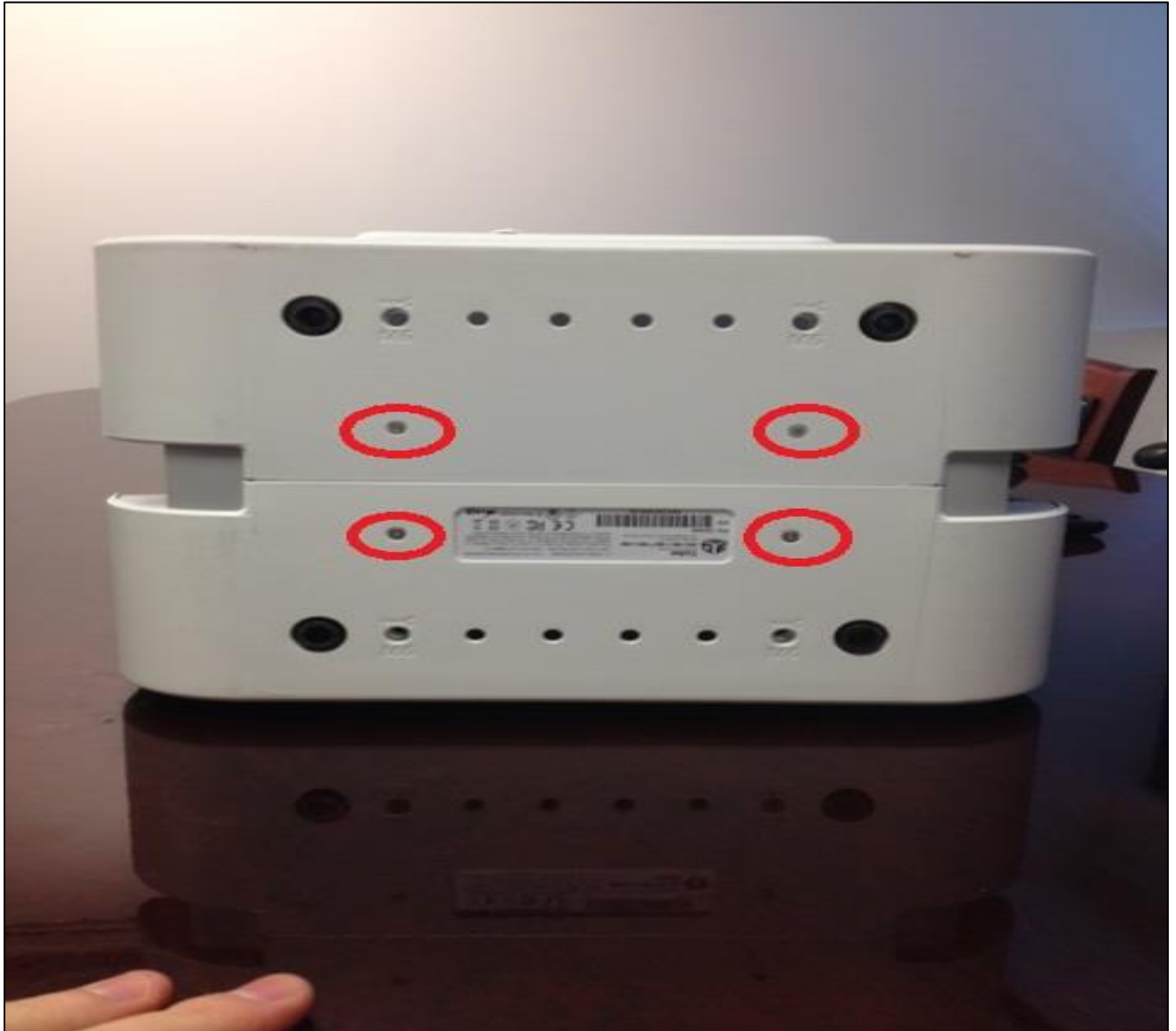
➤ Remove the 4 Phillip screws on **both sides** of the printer as indicated below:



- Looking at the bottom of the printer, pry the 4 small black pins out using a straight edge screw driver as pictured below:



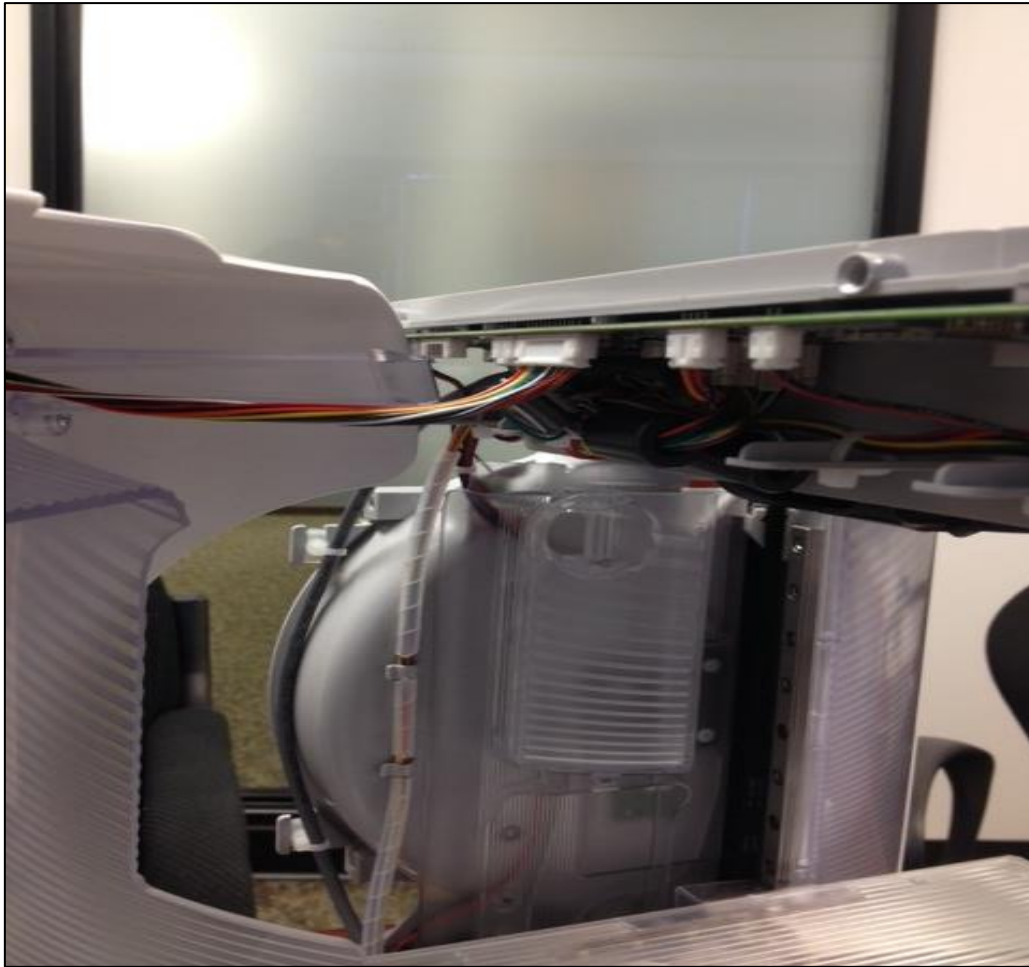
- Now, remove the 4 hex screws on the bottom of your device. The screw size is 2 mm.



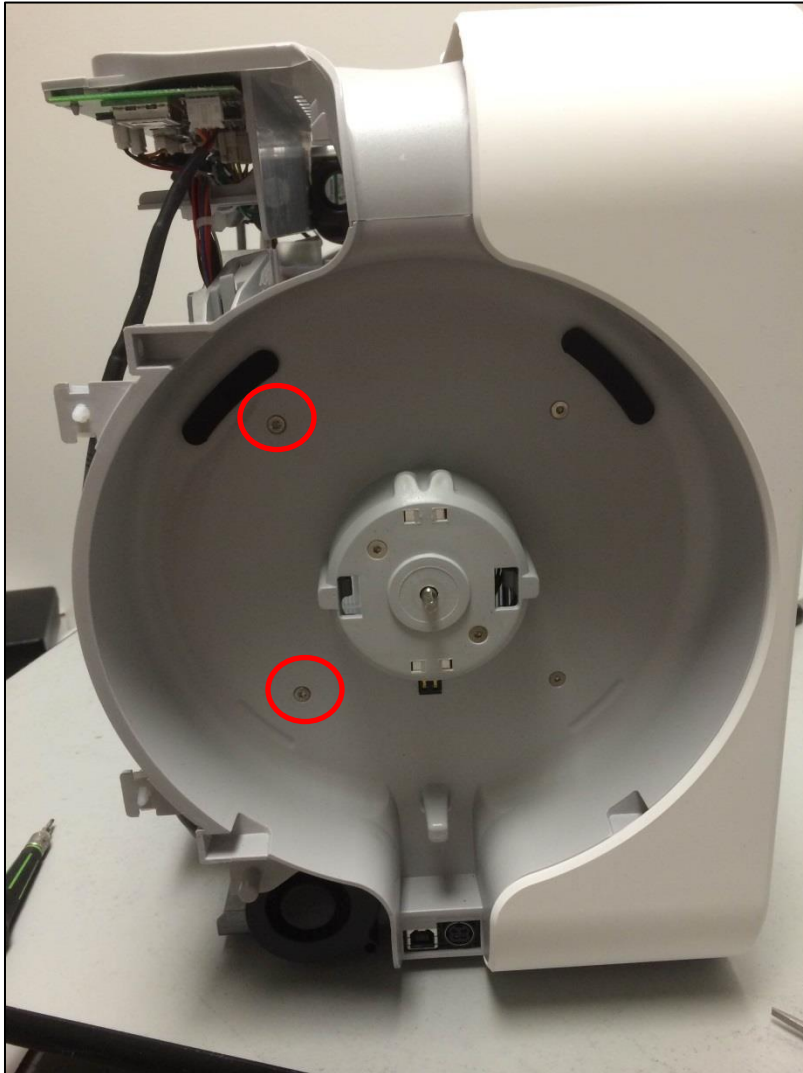
- There are two plastic clips on both sides of the printer. These will need to be unhooked.



- You will then be able to open your device as pictured below.
- Your LCD loom should be connected, but you may disconnect to open the device further.



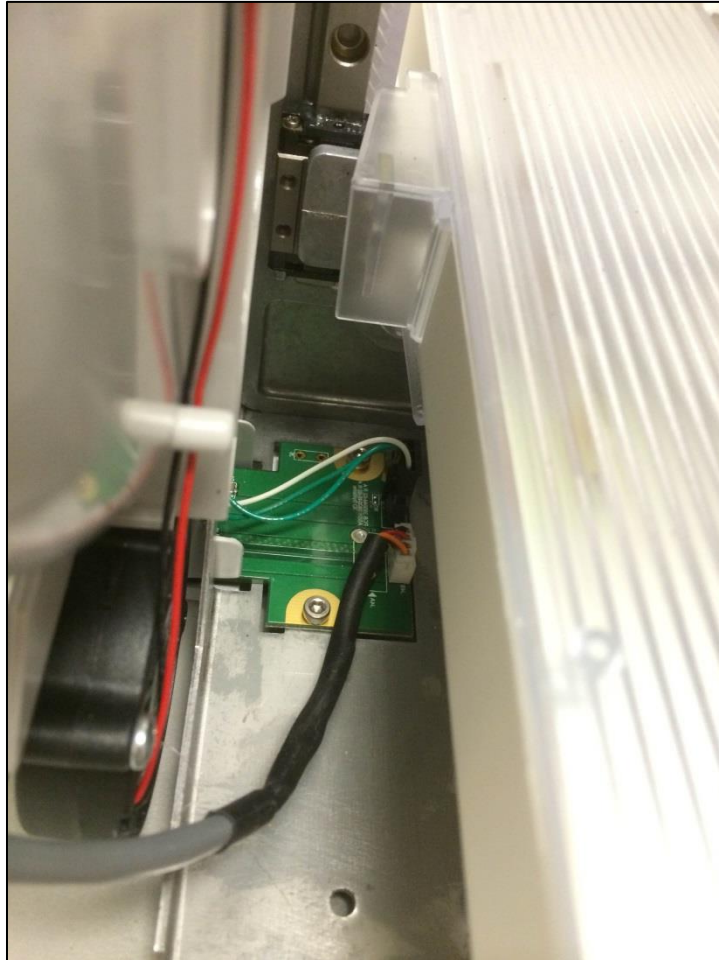
- From the right side of the printer where the power inlet is located, remove the 2 hex screws on the left side of the cartridge bay (2.0mm Hex screws).



- Gently remove the plastic cover behind the cartridge bay so you can easily access the PCB board (make sure you don't make contact with the board when removing this part).



- Remove the 2 hex screws that hold down the PCB board (2.5mm Hex) and gently unplug the cables connected to it (do not pull from the wires as this will create irreparable damages).



- From here you may either replace the PCB board, or plug the power inlet adapter back in. Once you're done, put everything back together by going backwards on this procedure. Good luck! 😊